

Employment Update for Central Washington

For: 2018 Washington Economic Development Association (WEDA) Summer Conference

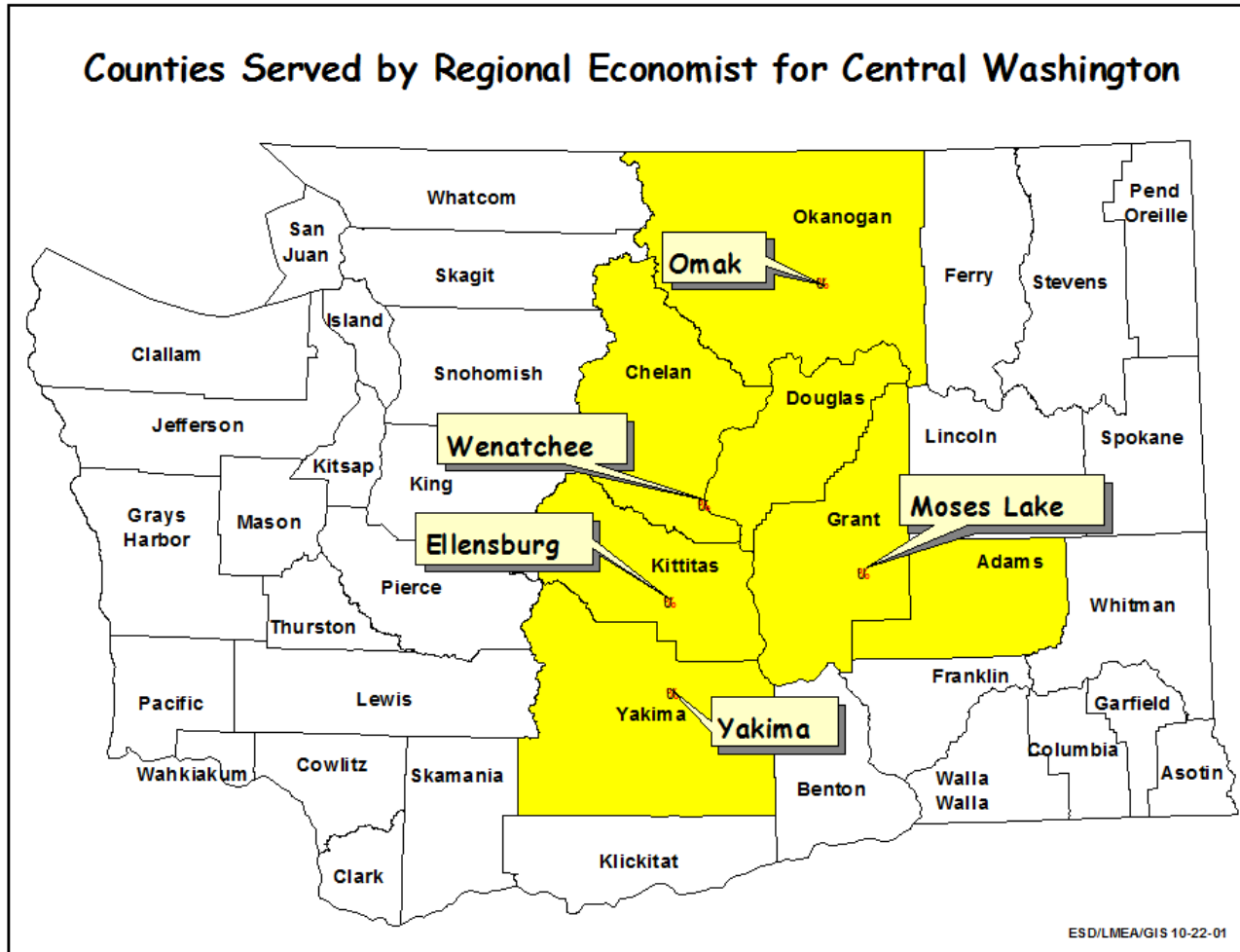
Donald W. Meseck
Regional Labor Economist

August 23, 2018



**Employment
Security
Department**
WASHINGTON STATE

My Area of Responsibility: Adams, Chelan, Douglas, Grant, Kittitas, Okanogan, and Yakima counties



This is a “three-part” presentation

Part 1: “Top 10” Occupations in Washington, ranked by jobs and growth rates - and where to find this information on our agency’s website

- **Slides 4-6**

Parts 2: Yakima County employment update

- **Slides 7-15**

Part 3: Wenatchee MSA (Chelan and Douglas counties) employment update

- **Slides 16-24**

Summary and contact information

- **Slides 25-26**

Labor Market Information (LMI): From the Employment Security Department

Labor Market Information website:
<https://esd.wa.gov/labormarketinfo>

Hyperlink to “Labor Market Information – website navigation info” posted on You Tube:

<https://www.youtube.com/watch?v=5PV3Kkmop8Y>

Note: For the Occupations in Demand (OID) list, click on

- “Learn about an occupation” under “FREQUENTLY USED LINKS”
- Hyperlink to OID list:

<https://esd.wa.gov/labormarketinfo/LAAO>

Washington State: Top 10 Occupations – ranked by employment

Number/ Ranking	Occupation	Estimated Employment in 2018	Long Term Growth Rate	Short Term Forecast
1	Retail Salespersons	105,514	0.9%	39,933
2	Combined Food Preparation and Serving Workers, Including Fast Food	81,544	2.4%	42,401
3	Office Clerks, General	75,237	1.3%	29,589
4	Cashiers	67,466	0.5%	24,022
5	Farmworkers and Laborers, Crop, Nursery, and Greenhouse	65,379	1.0%	33,736
6	Software Developers, Applications	60,433	5.0%	25,208
7	Laborers and Freight, Stock, and Material Movers, Hand	59,894	1.0%	25,340
8	Registered Nurses	57,560	1.9%	17,327
9	Personal Care Aides	53,092	2.2%	23,300
10	Waiters and Waitresses	51,893	2.0%	27,110

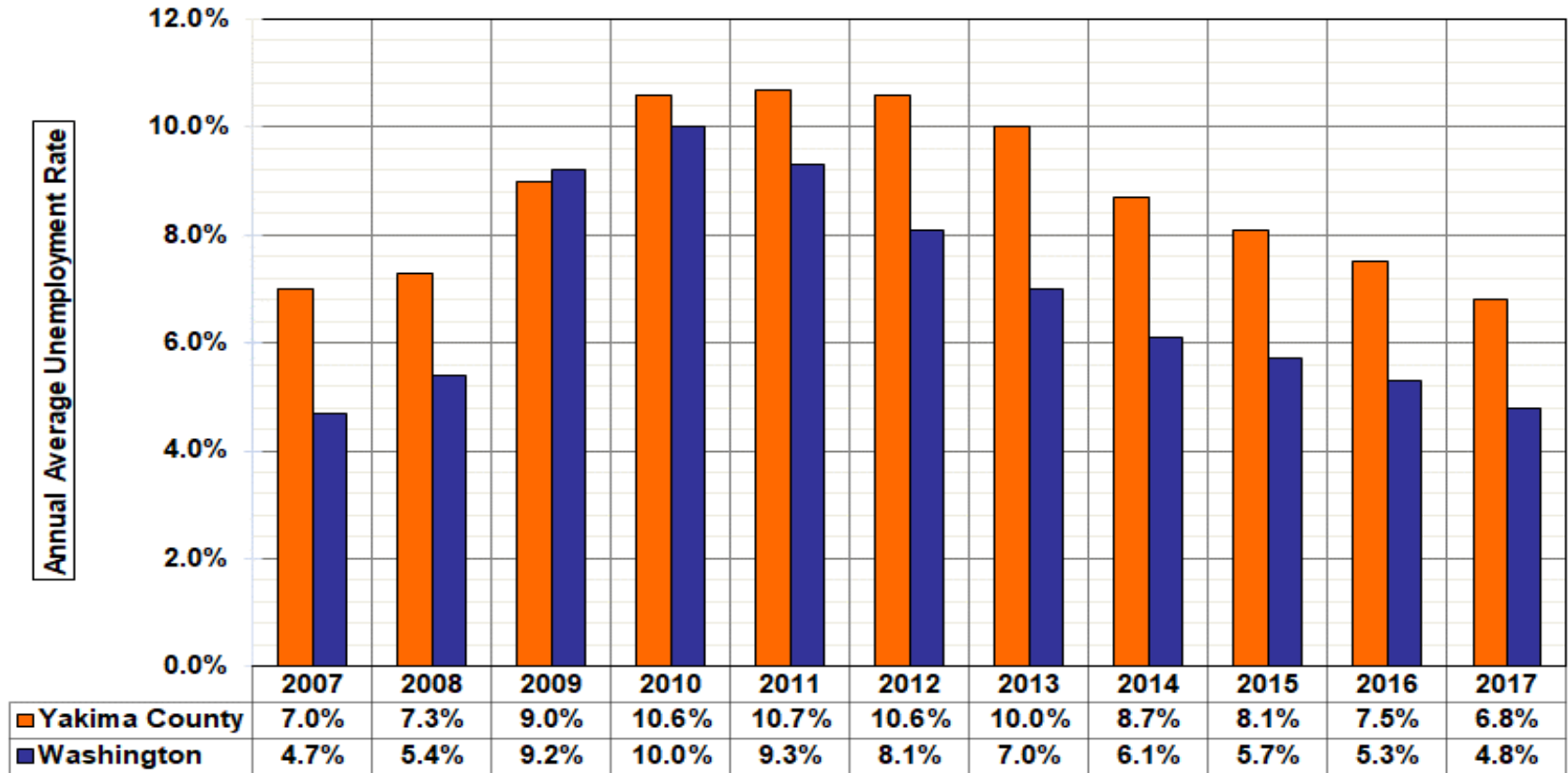
Source: 2018 Occupations In Demand (OID) list, ESD

Washington State: Top 10 Occupations – ranked by long term growth rate

Number/ Ranking	Occupation	Estimated Employment in 2018	Long Term Growth Rate	Short Term Forecast
1	Wind Turbine Service Technicians	106	7.4%	60
2	Marketing Managers	11,482	5.3%	5,890
3	Software Developers, Applications	60,433	5.0%	25,208
4	Computer Occupations, All Other	15,552	4.4%	7,662
5	Massage Therapists	8,800	4.4%	4,969
6	Psychiatric Technicians	901	4.2%	391
7	Web Developers	7,669	4.1%	3,641
8	Computer and Information Research Scientists	1,919	4.0%	672
9	Computer and Information Systems Managers	13,699	3.9%	5,651
10	First-Line Supervisors of Gaming Workers	2,621	3.7%	953

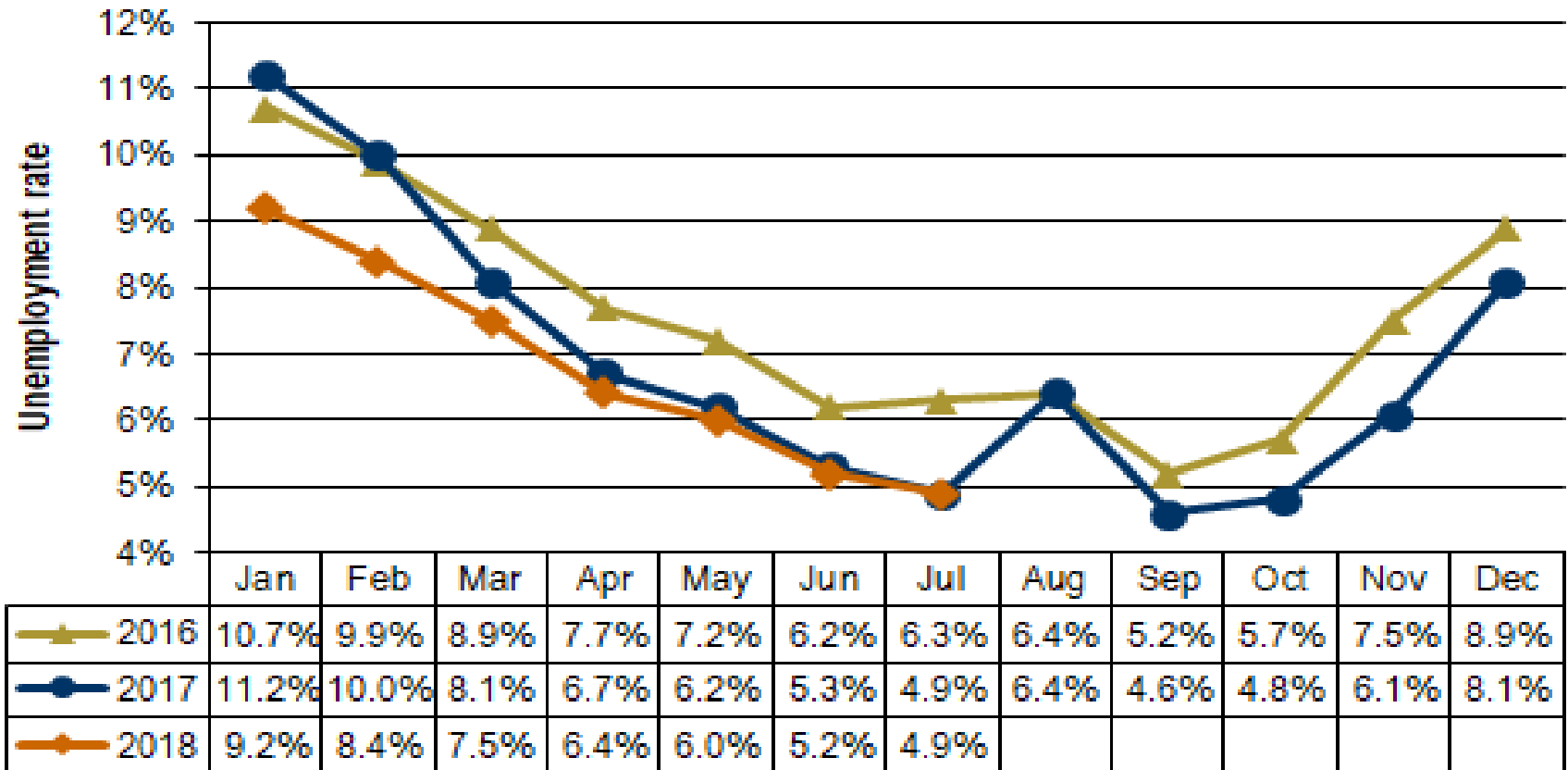
Source: 2018 Occupations In Demand (OID) list

Annual Average Unemployment Rates in Yakima County and in Washington from 2007-2017 (As of 21 Aug 18)



Source: LAUS Data

Unemployment Rates in Yakima County: From January 2016-July 2018 (As of 21 Aug 18)



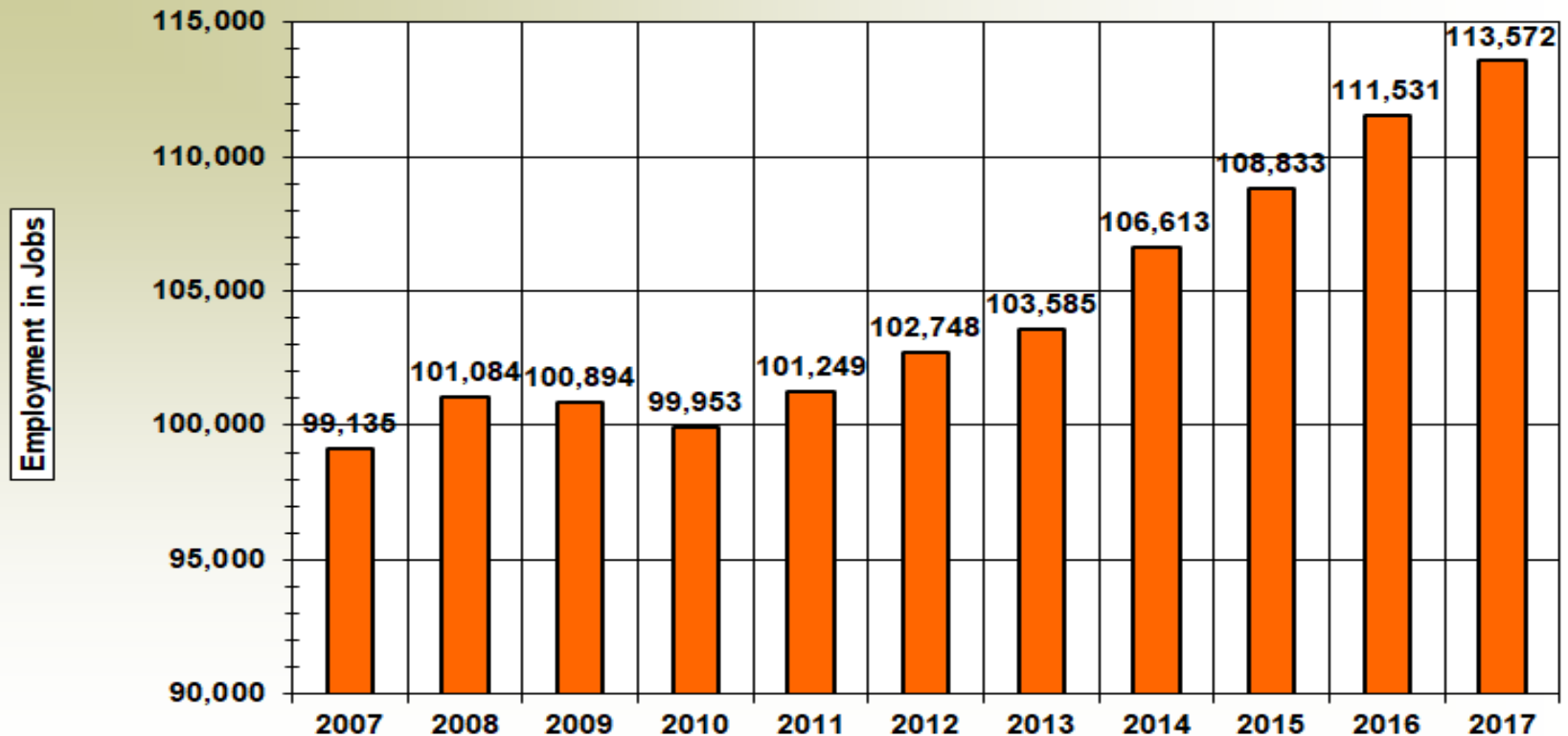
Source: LAUS Data

Yakima County's Civilian Labor Force: From July 2017-July 2018

			Change	
			Jul-17	Jul-17
Yakima County	Preliminary Jul-18	Revised Jul-17	Jul-18	Jul-18 %
Labor force and unemployment				
Civilian labor force	136,976	135,651	1,325	1.0%
Resident employment	130,304	128,962	1,342	1.0%
Unemployment	6,672	6,689	-17	-0.3%
Unemployment rate	4.9	4.9	0.0	

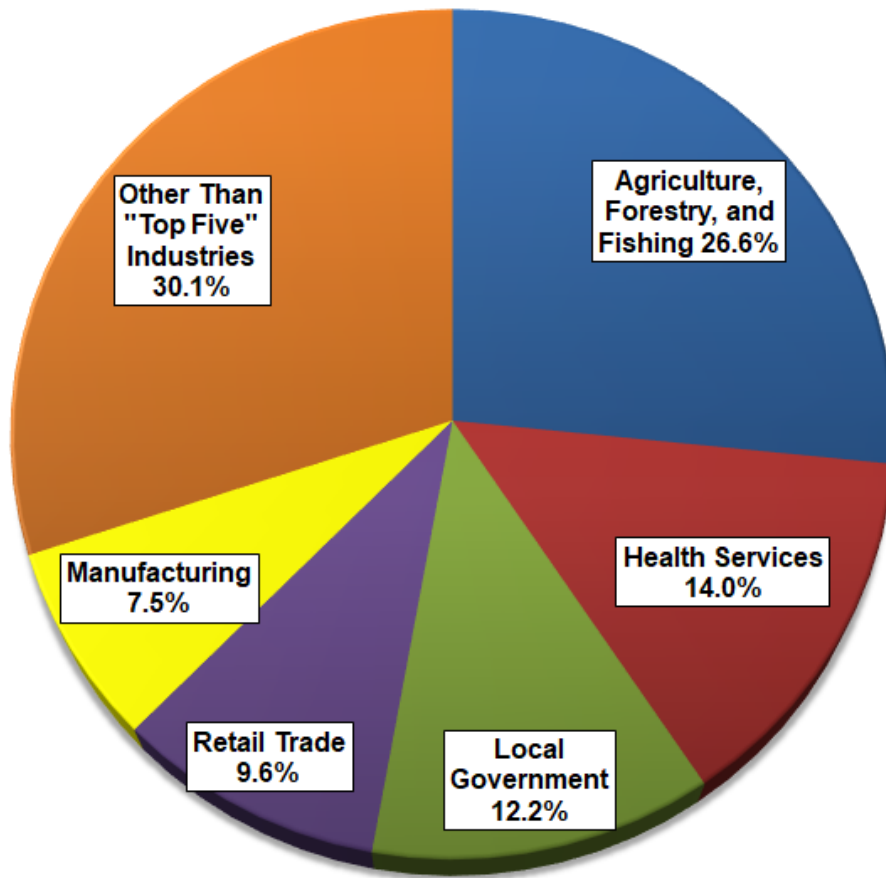
Source: LAUS Data

Yakima County: Total covered employment from 2007-2017



Source: QCEW Data

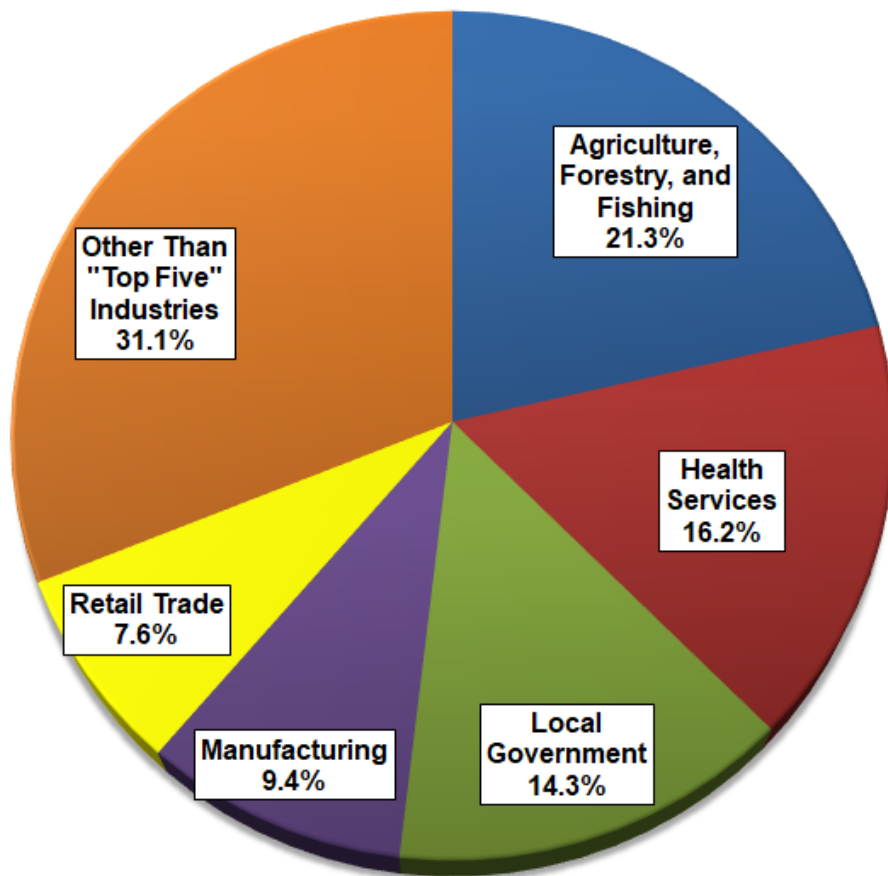
Yakima County: Top 5 industries by covered employment in 2017



Industry	Number of Jobs
Agriculture, Forestry, and Fishing	30,236
Health Services	15,912
Local Government	13,859
Retail Trade	10,884
Manufacturing	8,528
Other Than "Top Five" Industries	34,153
Total Covered Employment	113,572

Source: QCEW Data

Yakima County: Top 5 industries by covered wages in 2017



Industry	Number of Jobs
Agriculture, Forestry, and Fishing)	\$929,776,678
Health Services	\$704,953,450
Local Government	\$624,844,417
Manufacturing	\$409,647,461
Retail Trade	\$332,751,886
Other Than "Top Five" Industries	\$1,355,162,171
Total Covered Wages	\$4,357,136,063

Source: QCEW Data

Yakima County in 2017: Summary of “Top 5” industries (by covered employment)

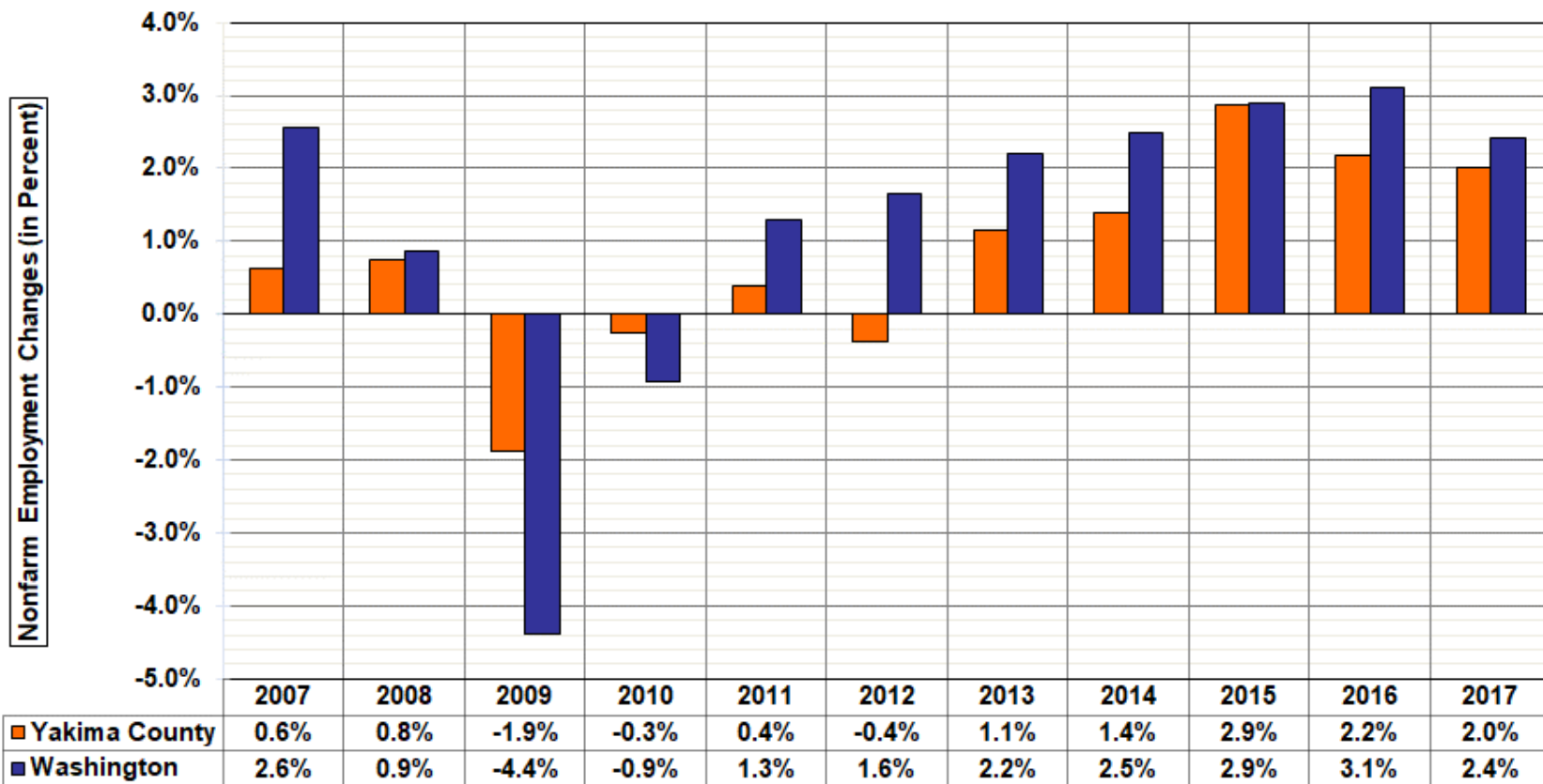
Total covered wages = \$4.36 billion

Average annual employment = 113,572

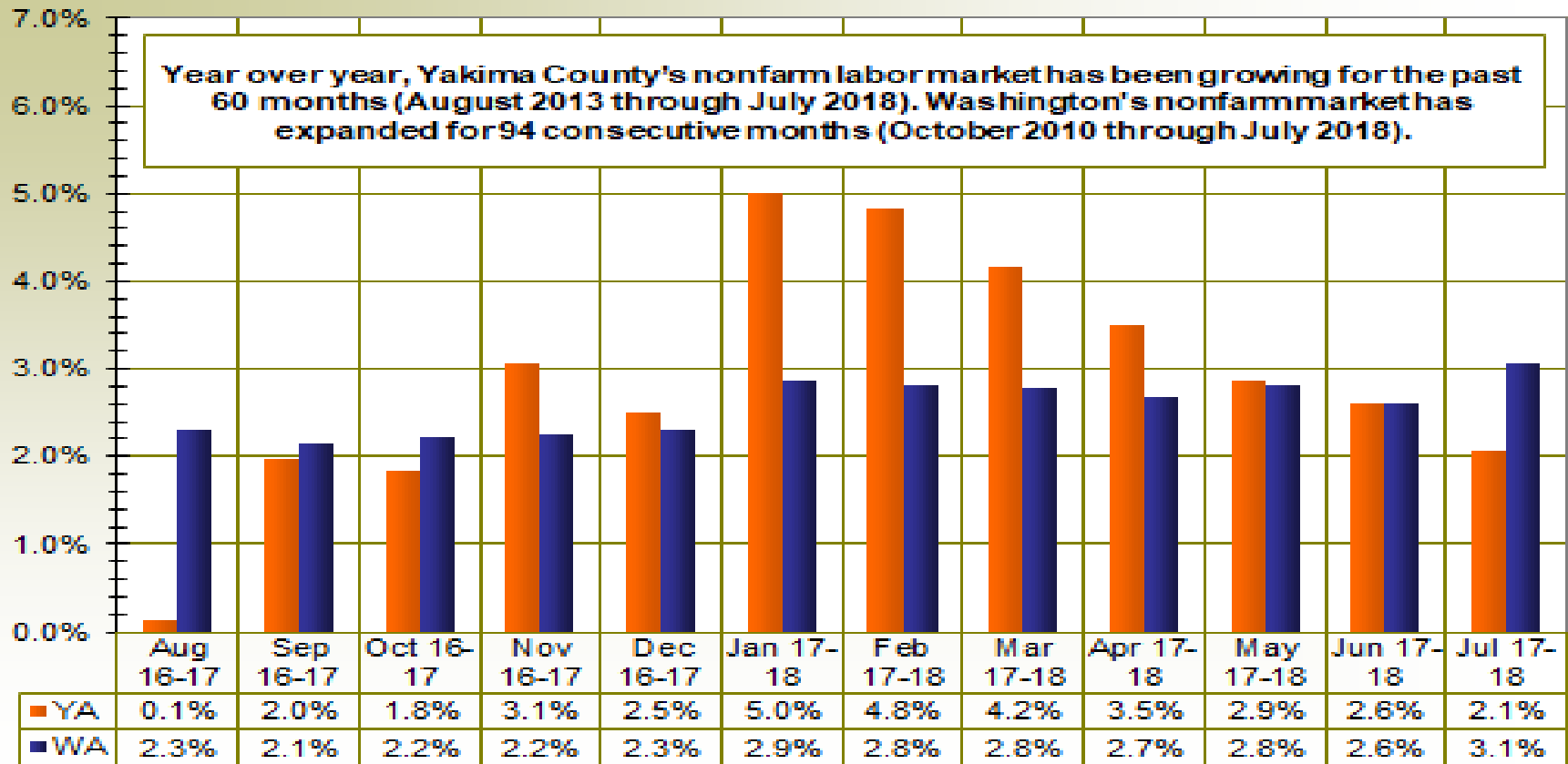
Average annual wage = \$38,365 (61.8 percent of Washington State’s average annual wage in 2017 of \$62,077)

Industry	Percent of jobs (in Yakima County)	Percent of wages (in Yakima County)
Agriculture	26.6	21.3
Health services	14.0	16.2
Local government	12.2	14.3
Retail trade	9.6	7.6
Manufacturing	7.5	9.4

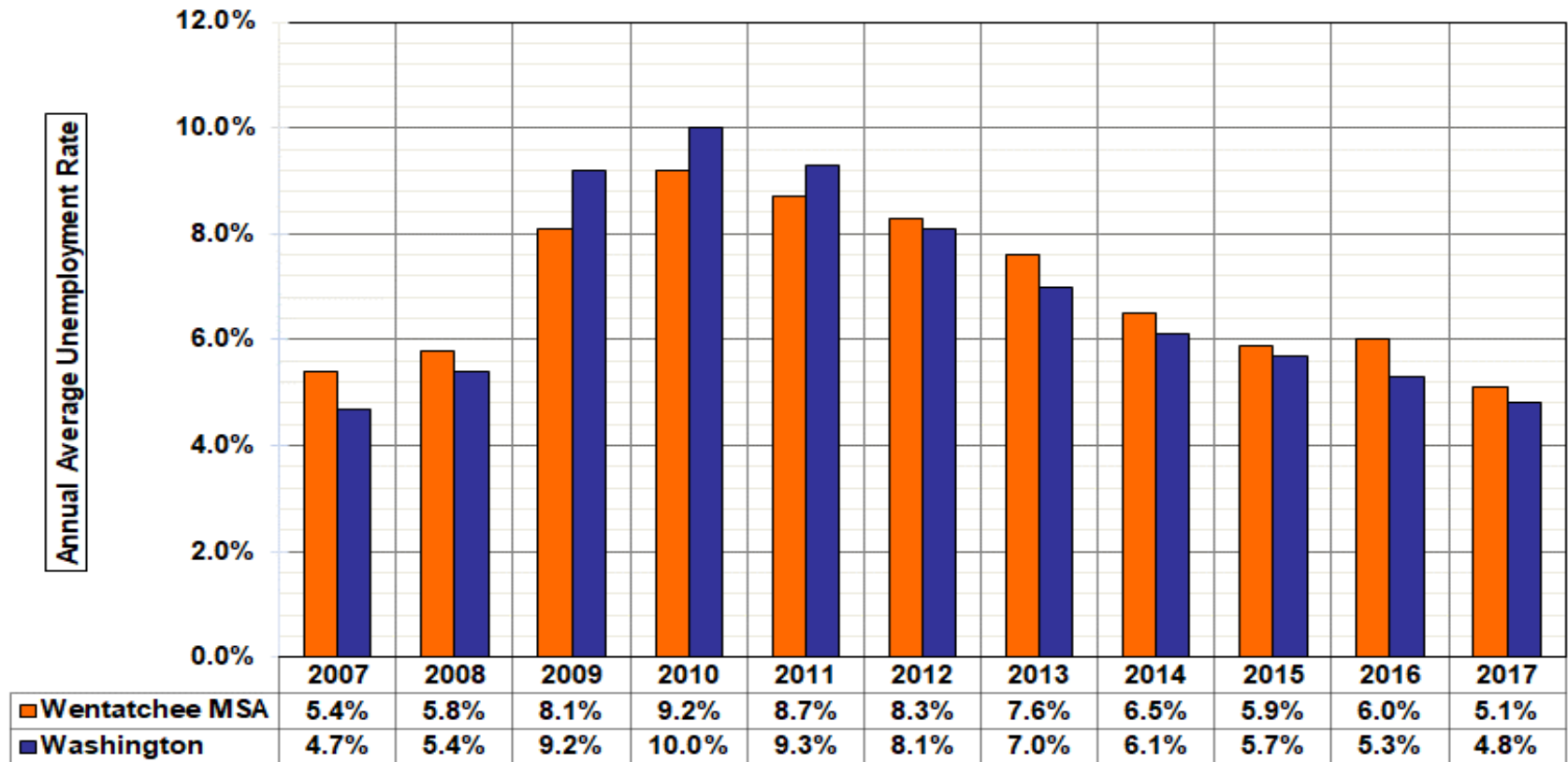
Yakima County and Washington: Nonfarm employment changes during the last 10 years (2007-2017)



Nonfarm employment changes in Yakima County and Washington in the last twelve months

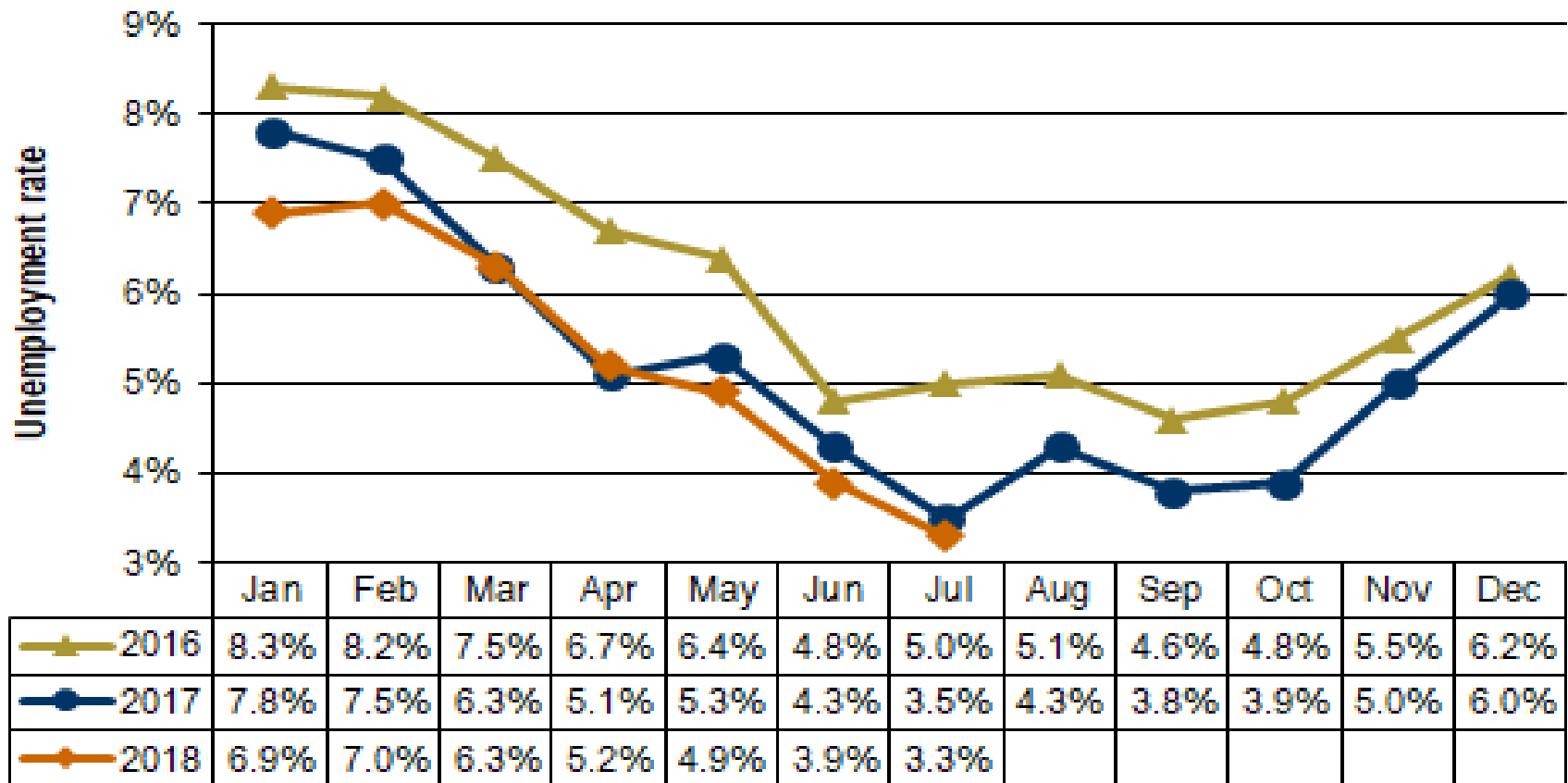


Annual Average Unemployment Rates in the Wenatchee MSA and in Washington from 2007-2017 (As of 21 Aug 18)



Source: LAUS Data

Unemployment Rates in the Wenatchee MSA: From January 2016-July 2018 (As of 21 Aug 18)



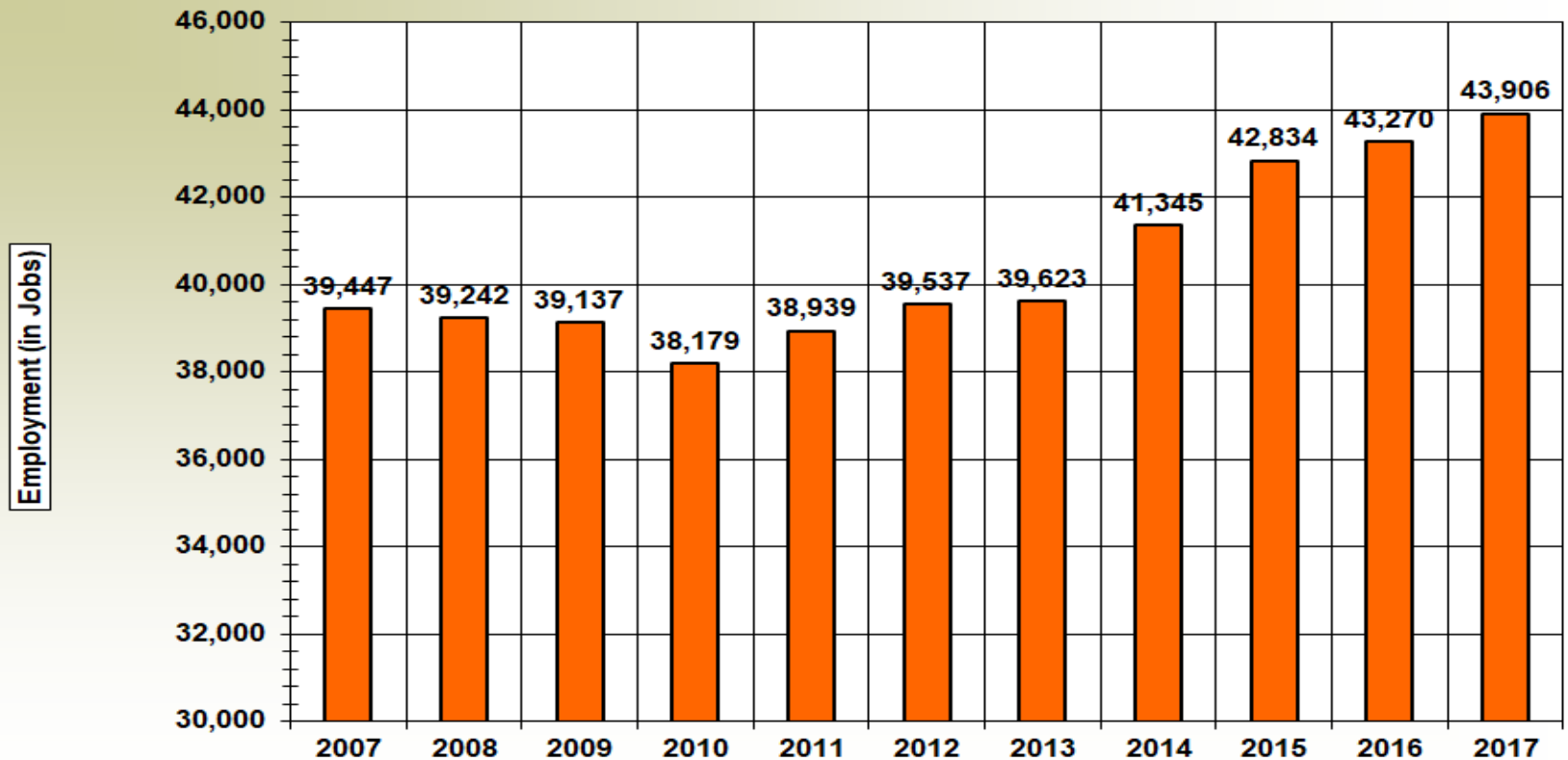
Source: LAUS Data

The Wenatchee MSA's Civilian Labor Force: From July 2017-July 2018

	Preliminary Jul-18	Revised Jul-17	Change	
			Jul-17 Jul-18	Jul-17 Jul-18 %
Wenatchee MSA				
Labor force and unemployment				
Civilian labor force	76,670	77,992	-1,322	-1.7%
Resident employment	74,167	75,258	-1,091	-1.4%
Unemployment	2,503	2,734	-231	-8.4%
Unemployment rate	3.3	3.5	-0.2	

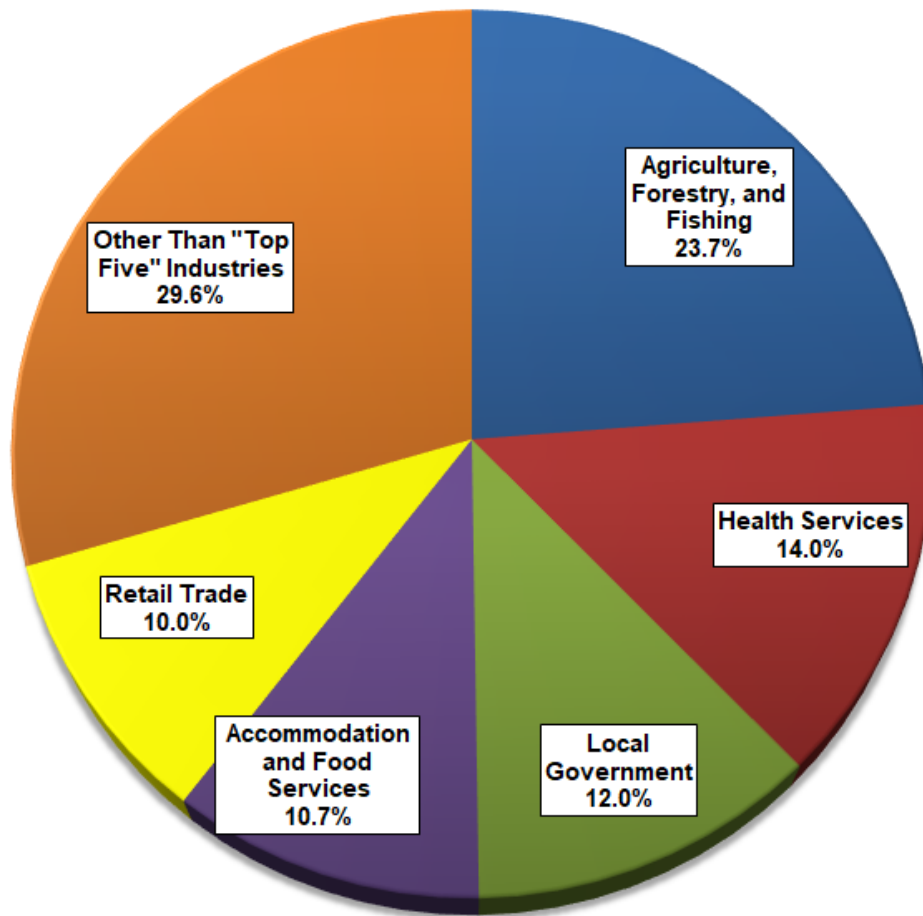
Source: LAUS Data

Chelan County: Total covered employment from 2007-2017



Source: QCEW Data

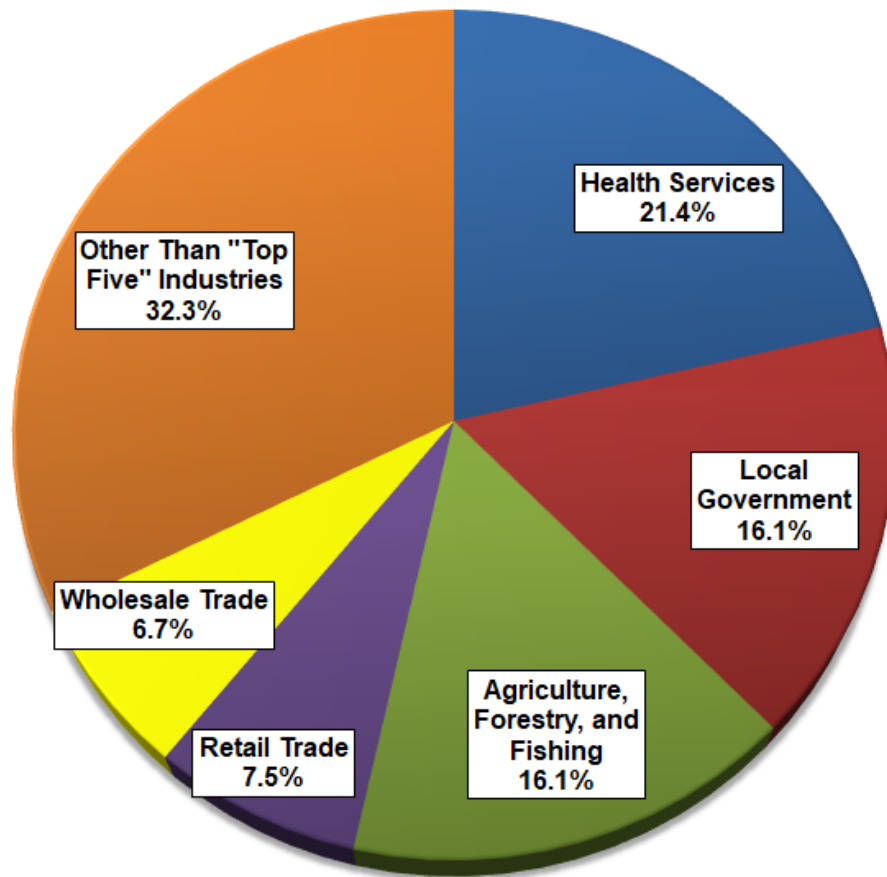
Chelan County: Top 5 industries by covered employment in 2017



Industry	Number of Jobs
Agriculture, Forestry, and Fishing	10,422
Health Services	6,158
Local Government	5,269
Accommodation and Food Services	4,685
Retail Trade	4,386
Other Than "Top Five" Industries	12,986
Total Covered Employment	43,906

Source: QCEW Data

Chelan County: Top 5 industries by covered wages in 2017



Industry	Wages (in \$)
Health Services	\$366,818,742
Local Government	\$275,327,855
Agriculture, Forestry, and Fishing	\$275,311,160
Retail Trade	\$127,775,088
Wholesale Trade	\$115,080,194
Other Than "Top Five" Industries	\$553,082,662
Total Covered Wages	\$1,713,395,701

Source: QCEW Data

Chelan County in 2017: Summary of “Top 5” industries (by covered employment)

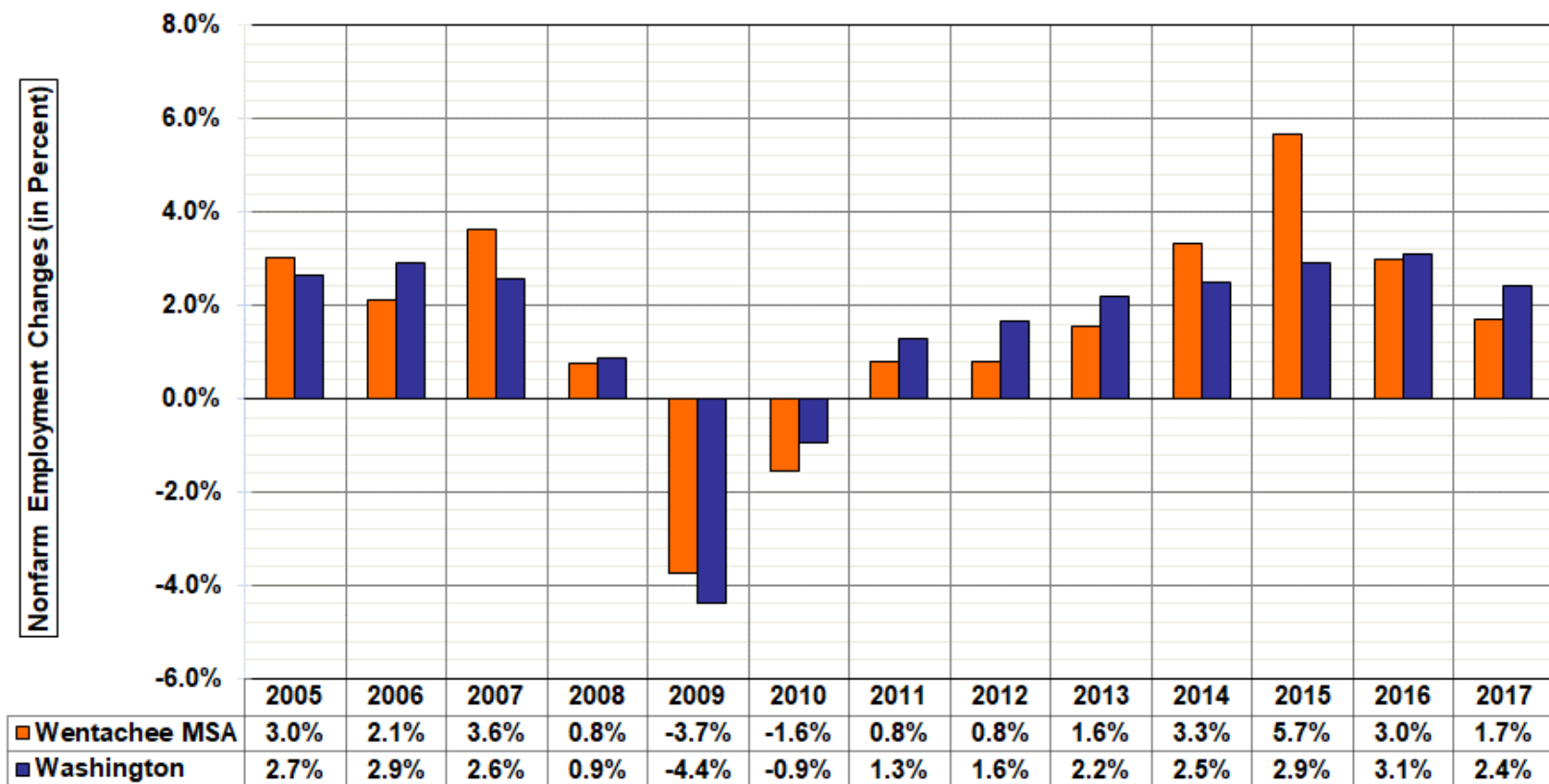
Total covered wages = \$1.71 billion

Average annual employment = 43,906

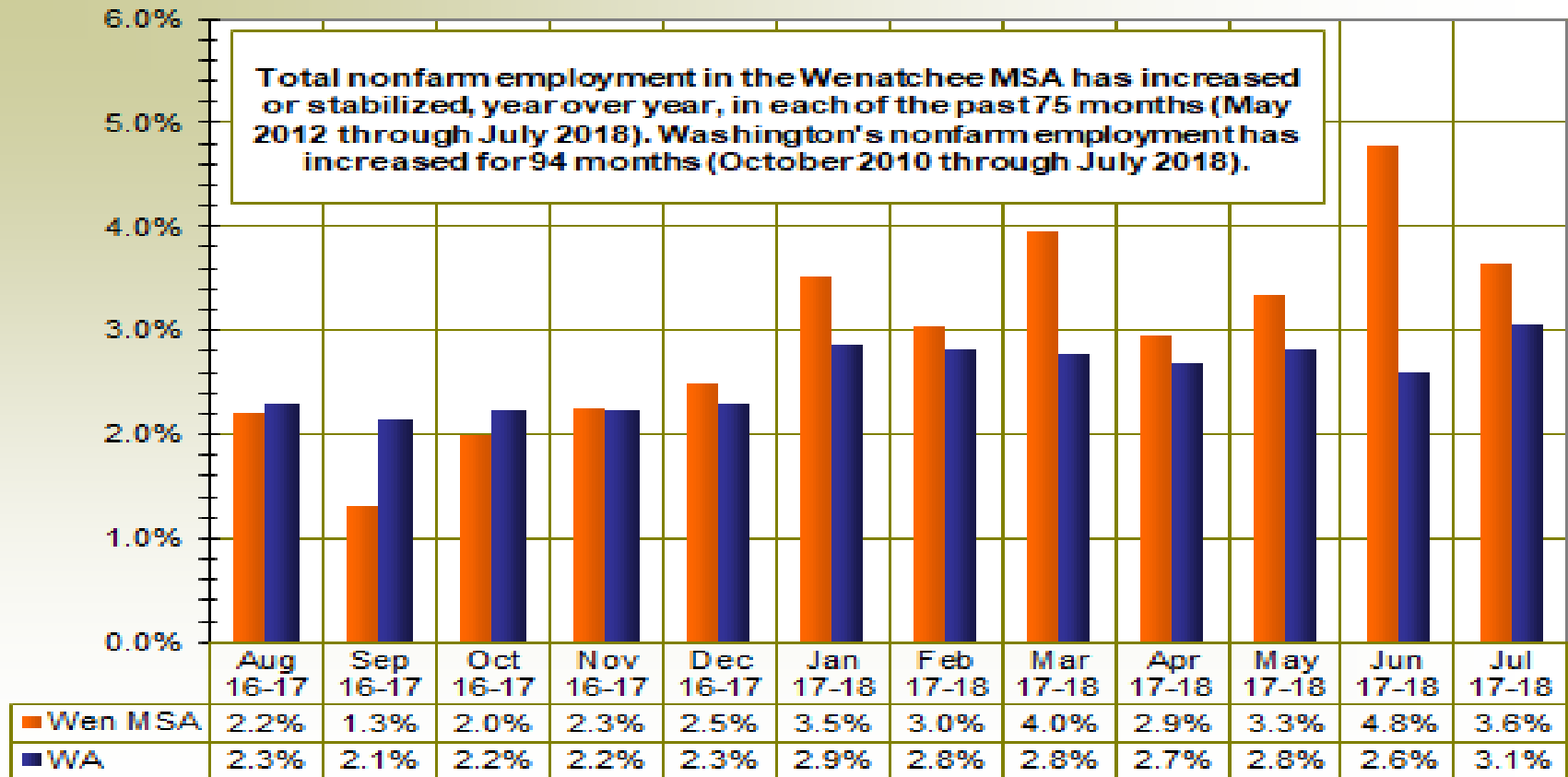
Average annual wage = \$39,024 (62.9 percent Washington State’s average annual wage in 2017 of \$62,077)

Industry	Percent of jobs (in Chelan County)	Percent of wages (in Chelan County)
Agriculture	23.7	16.1
Health services	14.0	21.4
Local government	12.0	16.1
Accommodation and food services	10.7	5.6
Retail trade	10.0	7.5

Wenatchee MSA and Washington: Nonfarm employment changes during the last 10 years (2007-2017)



Nonfarm employment changes in the Wenatchee MSA and Washington in the last twelve months



Unemployment rates in the Wenatchee and Yakima MSAs fell to historic low levels in 2017

- **Yakima County's unemployment rate declined from 7.5 in 2016 to 6.8 percent in 2017 while the Wenatchee MSA's rate fell from 6.0 in 2016 to 5.1 percent in 2017.**
- **Washington's nonfarm market expanded by 2.4 percent last year. Only one Central WA area grew faster - Kittitas County (up 2.7 percent). Job growth rates in other areas: Yakima (2.0 percent), Wenatchee MSA (1.6 percent), Adams (0.7 percent), Grant (0.6 percent), and Okanogan (minus-1.6 percent).**
- **2018 starting out well for Adams County, Kittitas County, the Wenatchee MSA, and Yakima with total nonfarm job growth rates generally at or above Washington's. Conversely, Grant County (Takata and REC Silicon layoffs this year) and Okanogan County (closure of Omak Forest Products in January 2017) are experiencing slower job growth thus far in 2018.**

Point of contact (POC) information and questions

Donald W. Meseck

Regional Labor Economist for Adams, Chelan, Douglas, Grant, Kittitas,
Okanogan, and Yakima Counties

Workforce Information and Technology Services (WITS)
Employment Security Department

Address: 1205 Ahtanum Ridge Drive, Union Gap, WA 98903

Phone: (509) 574-0167

Email: dmeseck@esd.wa.gov

Website: <https://esd.wa.gov/labormarketinfo>